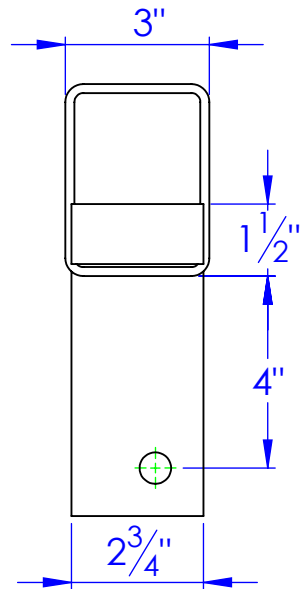
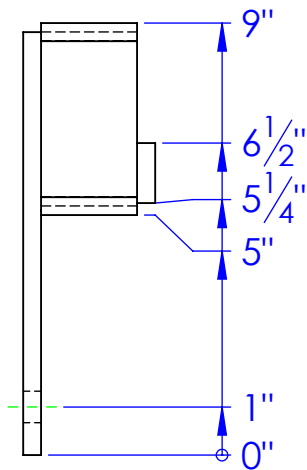
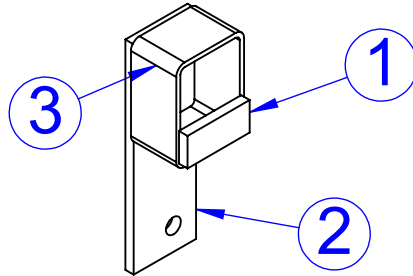
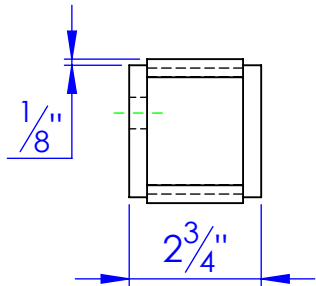


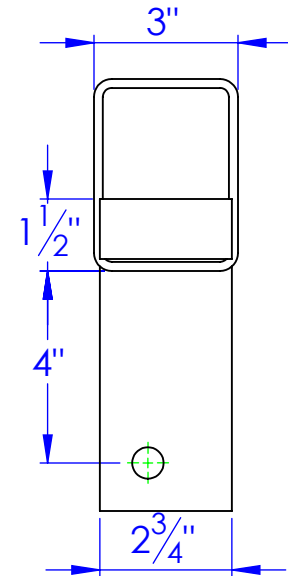
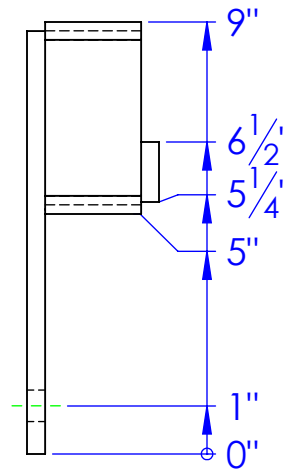
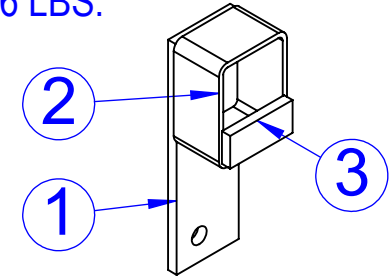
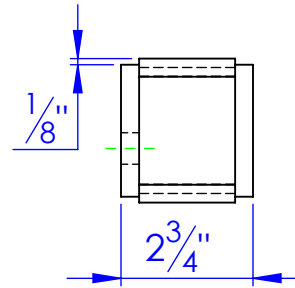
ITEM NO.	PART NUMBER	DESCRIPTION	MATERIAL	DRAWING #	QTY.
1	FI .375 x 1.25 L 2.75	FRAME LEVEL BLOCK LENGTH: 2-3/4	FI 3/8x1-1/4"	STOCK	1
2	FP-LL STRAP 8.8125	LEVEL LOK MOUNTING STRAP 8-13/16"	ST-FI 3/8x2-3/4"	90-2826	1
3	FP-RT 4X3X.1875 L 2	LENGTH 2"	RT 4x3x3/16"	STOCK	1

**FP-DLL2-3 DS**  
**REAR BRKT, DLL-2, WLDMT DRIVER SIDE**  
**4.26 LBS.**



ITEM NO.	PART NUMBER	DESCRIPTION	MATERIAL	DRAWING #	QTY.
1	FP-LL STRAP 8.8125	LEVEL LOK MOUNTING STRAP 8-13/16"	ST-FI 3/8x2-3/4"	90-2826	1
2	FP-RT 4X3X.1875 L 2	LENGTH 2"	RT 4x3x3/16"	STOCK	1
3	FI .375 x 1.25 L 2.75	FRAME LEVEL BLOCK LENGTH: 2-3/4	FI 3/8x1-1/4"	STOCK	1

**FP-DLL2-3 PS**  
**REAR BRKT, DLL-2, WLDMT PASSENGER SIDE**  
**4.26 LBS.**



P.O. BOX 248,  
SABETHA, KS 66534

**TRIPLE C**  
INC.

REV.	DESCRIPTION	DATE	APPROVED
A	UPDATED TO NEW DWG FROM # 10-1828 C	1/23/2013	

**PROPRIETARY AND CONFIDENTIAL**  
THE INFORMATION CONTAINED IN THIS  
DRAWING IS THE SOLE PROPERTY OF TRIPLE  
C INC. ANY REPRODUCTION IN PART OR  
AS A WHOLE WITHOUT THE WRITTEN  
PERMISSION OF TRIPLE C INC. IS PROHIBITED.

DIMENSIONS ARE IN INCHES  
TOLERANCES:  
FRACTIONAL  $\pm 1/16$   
ANGULAR: MACH  $\pm 1$  BEND  $\pm$   
TWO PLACE DECIMAL  $\pm 0.10$   
THREE PLACE DECIMAL  $\pm 0.005$

MATERIAL ---  
DO NOT SCALE DRAWING

NAME	DATE
DRAWN HEATH	1/23/13
PART #	
ASM #	SEE DWG
COMMENTS:	

**REAR BRKT,  
DLL-2, WLDMT**

SIZE	DWG. NO.	REV.
A	90-1822-28	A
SCALE: 1:4	WEIGHT:	SHEET 1 OF 1